

TOURNAMENT SCHEDULE

11:00-12:00 - Registration & Warm-up.
Driving Range will be open

12:15-12:30 - Gather at carts for play & day
of event information

12:30 - Golf balls in the air

5:30 - Dinner, prizes, brief presentation

DIRECTIONS TO TURTLE CREEK

Heading West on Route 422:

Royersford Exit: Look for the Turtle Creek sign approx 1/4 mile before exit. At the end of the ramp, bear right onto Walnut Street. Walnut St will turn into Township Line Rd. Approx 2 miles to the 4th traffic light, look for the Turtle sign at the light and make the left turn onto Ridge Pike. Follow Ridge Pike for 1.5 miles. The golf course entrance is on your left (after Waltz Gold Farm).

Heading East on Route 422:

Limerick/Linfield Exit: Look for the Turtle Creek signs approx 1/4 mile before the exit. Take exit ramp and turn left onto N Lewis Rd. Due to construction on N Lewis Rd, at the 2nd light, turn right onto W Linfield Rd. Then, take a left onto S Limerick Rd. Follow it until you come to Ridge Pike. Turn right onto Ridge Pike. The golf course entrance will be on your right (before Waltz Golf Farm).

TURTLE CREEK GOLF CLUB

Royersford, PA
www.turtlecreekgolf.com



TOURNAMENT HIGHLIGHTS:

- Scramble Format
- Dinner
- Prizes
 - 2 Long Drives (man/woman)
 - 2 Closest to Pin (man/woman)
 - Split the Pot, Par 3
 - Prizes 1st, 2nd & 3rd
 - Last Place Prize
 - Mulligans Available

1ST ANNUAL

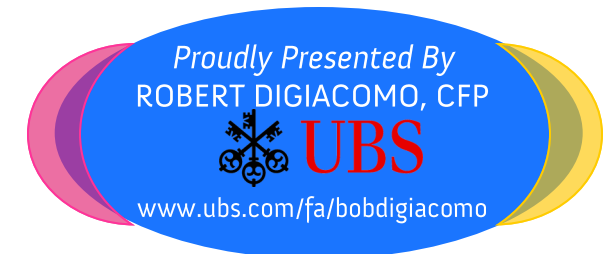


ANDREW L. HICKS JR.

MEMORIAL GOLF OUTING

MONDAY, JUNE 18, 2012
TURTLE CREEK GOLF CLUB
12:30PM SHOTGUN START

*“Making a difference in the lives of
Chester City Youth”*



SPONSORSHIP OPPORTUNITIES

CAMP PARADISE PREMIERE SPONSOR

Covers the cost of a cabin of children at Camp Paradise. Includes a foursome, 2 hole sponsorships & special recognition. **\$2,500**

THE CAMP PARADISE FOURSOME

Send 4 children to Camp Paradise. Includes a foursome and one hole sponsorship. **\$1,000**

THE CAMP PARADISE TWOSOME

Send 2 children to Camp Paradise. Includes a twosome and one hole sponsorship. **\$500**

INDIVIDUAL GOLFER & SPONSOR A CHILD

Send one child to Camp Paradise. Includes golf, dinner, and prizes. **\$275**

HOLE SPONSOR

Help defray the costs of sending children to Camp Paradise with a hole sponsorship. **\$125**

GOLFING ONLY

Includes golf, dinner, and prizes. **\$150**

REGISTRATION

Player 1 _____

Phone # _____

Email _____

Player 2 _____

Phone # _____

Email _____

Player 3 _____

Phone # _____

Email _____

Player 4 _____

Phone # _____

Email _____

Golfing Only (\$150) _____

Sponsorship Level _____

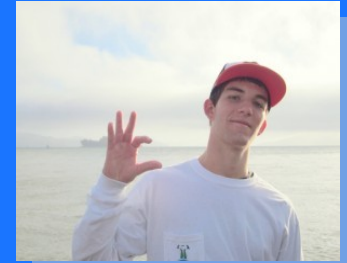
Make checks payable to 'Andrew L. Hicks, Jr. Foundation' and mail to:

John Goebel
307 S Caldwell Circle
Downingtown, PA 19335

Online payment & registration by credit card is also available at
www.andrewhicksjrfoundation.org.

ABOUT THE ANDREW L. HICKS, JR FOUNDATION

"This is how we know what love is: Jesus Christ laid down his life for us. And we ought to lay down our lives for our brothers. If anyone has material possessions and sees his brother in need but has no pity on him, how can the love of God be in him? Dear children, let us not love with words or tongue but with actions and truth."
- 1 John 3:16-18



The foundation aims to identify opportunities, organize volunteers and provide the leadership necessary to make a difference in the lives of youth living in the City of Chester and the students at Henderson High School. The Board has identified short-term, medium-range, and long-term goals by looking through Andrew's eyes for those things that were most meaningful to him. You might notice that our logo is the "WC" imitating the hand gesture used to represent Andrew's hometown of West Chester. Inside the curve of the "C" is a star with a cross inscribed, symbolizing the light of Christ that we hope to bring to Chester.